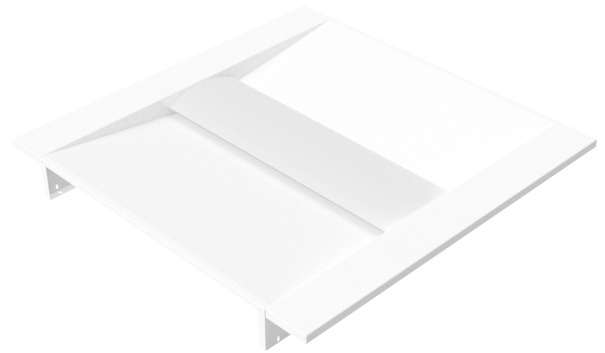


Project:
Type:
Date:
Product Code:
Approval:



BLRT33

The BLRT33 is a recessed lay-in fixture designed for use in metric T-bar ceilings and is well suited for use in office spaces where a clean, professional, 30x30 footprint is required.

FEATURES

- L70 of over 160,000 hours
- 0 - 10V dimming standard

OPTIONS

- Available in 3000K, 3500K, 4000K, 5000K, and 6500K
- Lumen packages are available from 2,000L to 4,000L
- Housing available with passive air handling
- 90 CRI available
- NEDAP wireless controls

APPLICATIONS

- Hospitals
- Offices
- Schools

WARRANTY

- Standard 5 year system, and 10 year LED warranty

OPTICS

Powder coated body in high-reflectance white. High-efficiency extruded lens maximizes light distribution while providing diffusion of LED point sources.

ELECTRICAL

All components are UL recognized. The fixture is available in 120 - 277V and 347V.

MOUNTING

Holes provided for chain or hanger wire mounting support for T-Bar ceilings. Surface mount kits are also available (consult factory for details).

CONSTRUCTION

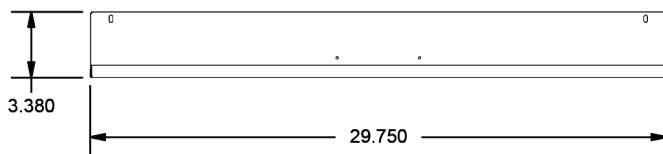
- Fixture materials are precision bent for added strength and rigidity
- Cold rolled steel body powder coated in high reflectance white
- Access panel provided for easy wiring
- Shallow fixture design for easy of installation and a clean, professional look

APPROVALS

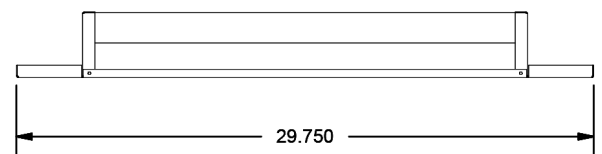
- ETL Listed

PRODUCT DIMENSIONS

End View



Side View



PRODUCT KEY

Fixture Type	Fixture Size	Lumen Output	CRI	Colour Temp	Driver Voltage	Options
BLRT	30x30					
		2	8 - 80 CRI	30 - 3000 K	UNV	Mounting M15 - Surface Mount Kit
		3	9 - 90 CRI	35 - 3500 K	347	Air Handling H20 - Housing with Passive Air Handling
		4		40 - 4000 K		Wireless Controls WC1 - NEDAP Wireless Controls
				50 - 5000 K		
				65 - 6500 K		

WATTAGE CHART

Length	Lumens	Wattage
30x30	2.0	16.41
	3.0	24.54
	4.0	33.87

- * Based on UNV voltage
- * Based on a Frosted lens
- * Based on 4000K