



Project

Product Code

Type

Date

Approval



The BRLS is an LED retrofit kit offering up to 50% in energy savings over a standard T8 fixture. It has been designed to covert existing 4ft and 8ft commercial or industrial strip fixtures from T8 or T12 to LED. Its flexibility and simple installation make it easy to take advantage of improved energy-efficiency and performance

### Overview

- L70 of 110,000 hours+
- L90 of 34,000 hours+
- 0 - 10V dimming standard
- 7-10 minute installation time

### Construction

- Manufactured in Ontario, Canada
- Pre-painted white steel fixture components are precision bent for added strength and rigidity
- Shallow design for ease of installation and a clean, professional look

### Electrical

- ETL certified to UL Canada and United States standards
- Available in 120 - 277V and 347V

### Optics

- High-efficiency frosted difuser maximizes light distribution while providing diffusion of LED point sources

### Mounting

- Holes provided for mounting inside existing fluorescent strip fixture using self-tapping screws

### Options

- 80 CRI standard - 90 CRI, 95+ CRI available
- Lumen packages are available from 2,000L to 8,000L
- Available in 3000K, 3500K, 4000K, 5000K, and 6500K
- 90 CRI available

### NOTES

## ↓ ↓ ↓ NOMENCLATURE

Fixture Type	Fixture Size	Fixture Width	Lumen Output	CRI	Color Temp	Driver Voltage	Options
BRLS							
	4'	2.75/3W	2	8 - 80 CRI	30 - 3000 K	UNV - 120-277V	
		3.25/4W	2.5	9 - 90 CRI	35 - 3500 K	347 - 347V	
		4.25/5W	3		40 - 4000 K		
			3.5		50 - 5000 K		
			4		65 - 6500 K		
			4.5				
			5				
			4				
			5				
			6				
	8'		7				
			8				
			9				
			10				

**Lenses**  
Blank - Frosted Acrylic Lens

**Controls**  
B11 - 0-10V Dimming Lead  
WC22 - JDRF - ZigBee  
WC\*\* - Other Options Available

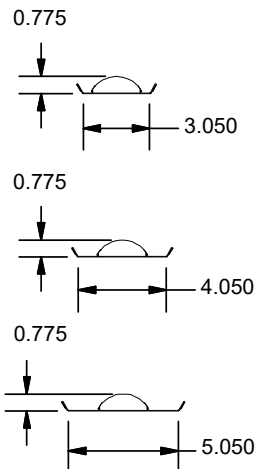
**Emergency Driver**  
B17 - Emergency Driver

**Packaging**  
P0 - Bulk Packaging  
P\*\* - Other Options Available

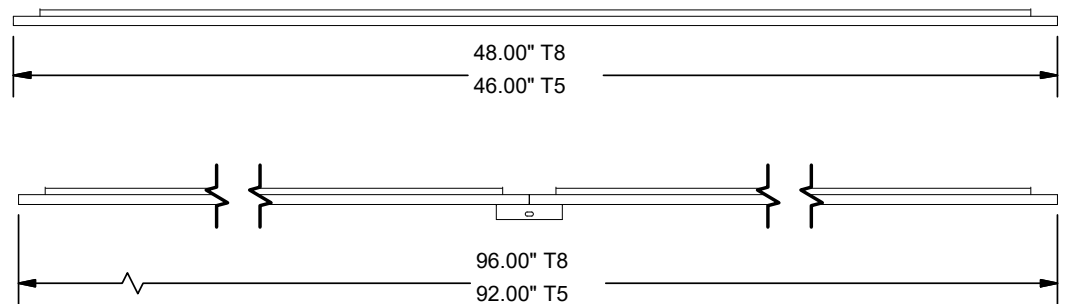
\*\* - Consult BJ Take for more fixture options

## 📦 DIMENSIONS

End View



Side View



 SPECIFICATIONS

### WATTAGE CHARTS

BRLS Wattage Chart									
Length	Lumen Output	Actual Lumen Output	Fixture Wattage	Lumens per Watt	Length	Lumen Output	Actual Lumen Output	Fixture Wattage	Lumens per Watt
4'	2.0	2133	17.34	123.0	8'	4.0	4269	32.28	132.2
	2.5	2675	21.66	123.5		5.0	5432	40.91	132.8
	3.0	3221	25.97	124.0		6.0	6660	49.54	134.4
	3.5	3772	30.29	124.5		7.0	7396	56.33	131.3
	4.0	4327	34.60	125.1		8.0	8445	64.78	130.4

Based on UNV Voltage  
 Based on 4000K  
 Based on 80 CRI