

Project

Product Code

Type

Date

Approval

The BLWD is an LED wrap fixture designed for surface and suspended mounting. It is well suited for use in office spaces, hallways, and applications where existing luminaires can be replaced with a new energy efficient LED fixture while covering existing ceiling lines and unpainted areas.

Overview

- L70 of 230,000 hours+
- L90 of 70,000 hours+
- Fixture lensing provides an even light distribution through the use of 120 degree angle LED chips and a specially designed extruded lens
- 0 - 10V dimming standard

Construction

- Manufactured in Ontario, Canada
- Pre-painted white steel fixture components are precision bent for added strength and rigidity
- Access panel provided for easy wiring
- Shallow fixture design for ease of installation and a clean professional look

Electrical

- ETL certified to UL Canada and United States standards
- Available in 120 - 277V and 347V

Optics

- High-efficiency frosted diffuser maximizes light distribution while providing diffusion of LED point sources

Mounting

- Holes provided for surface and suspended mounting

Options

- 80 CRI standard - 90 CRI, 95+ CRI available
- Available in 3000K, 3500K, 4000K, 5000K, and 6500K
- Lumen packages are available from 2,000L to 6,000L
- Bluetooth and wireless mesh network controls

NOTES

⇅⇅⇅ NOMENCLATURE

Fixture Type	Fixture Size	Lumen Output	CRI	Color Temp	Driver Voltage	Options
BLWD	4'					
		2	8 - 80 CRI	30 - 3000 K	UNV - 120-277V	
		3	9 - 90 CRI	35 - 3500 K	347 - 347V	
		4		40 - 4000 K		
		5		50 - 5000 K		
		6		65 - 6500 K		

Motion Sensor

- W26 - Photocell Motion Sensor
- W53xxx - On/Off Motion Sensor
- W57 - Dimming Motion Sensor (Dims to 50% and stays at 50% output when unoccupied)
- WX16 - Microwave Dimmable Sensor
- W** - Other Options Available

Controls

- B11 - 0-10V Dimming Leads
- B12 - Line Voltage Dimming
- B17 - 10 Watt Battery Back Up
- B** - Other Options Available
- WC** - Wireless Controls

Colours

- Blank - White Low-Gloss, Matte Finish
- C5 - Black Low-Gloss, Matte Finish
- C10 - Silver Matte Finish
- C** - Other Options Available

Packaging

- P0 - Bulk Packaging
- P** - Other Options Available

** - Consult BJ Take for more fixture options

xx - Specify Length

1 - Custom cord lengths are available

2 - Custom Fixture lengths are available

Lenses

- Blank - Frosted Acrylic Lens

Cords

- W3xx - 16/3 White Cord
- W4xx - 16/3 Black Cord
- W** - Other Options Available

XX	Cord Length
06	6 Ft
10	10 Ft
15	15 Ft
20	20 Ft

Example: W306 - 6 foot white cord

Mounting

- M1 - V-Hangers
- M2xx - V-Hangers & Aircraft Cables
- M3xx - Y-Toggle Aircraft Cables
- M24 - Single Pendant Mount
- M** - Other Options Available

XX	Aircraft Length
05	5 Ft
10	10 Ft
15	15 Ft
20	20 Ft

Example: M310 - 10 foot aircraft cables

Wire Guard

- G1 - Curved White Wire Guard

📄 SPECIFICATIONS

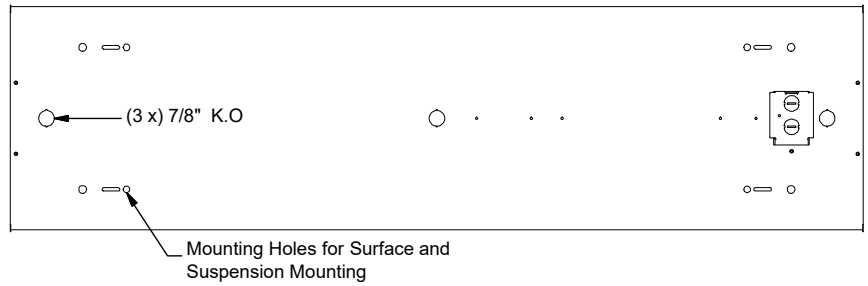
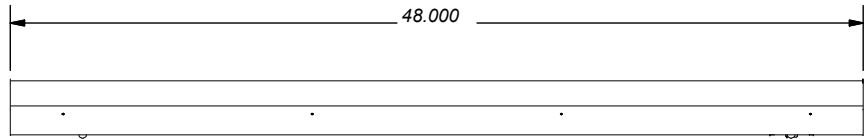
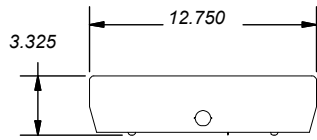
Length	Lumen Output	Actual Lumen Output	Fixture Wattage	Lumens per Watt
4'	2	2124	17	123.06
	3	3136	24	130.67
	4	4148	32	129.63
	5	5160	40	129.00
	6	6172	48	128.58

Based on UNV Voltage

Based on 4000K

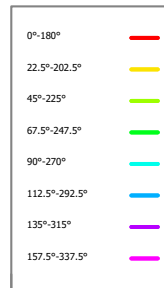
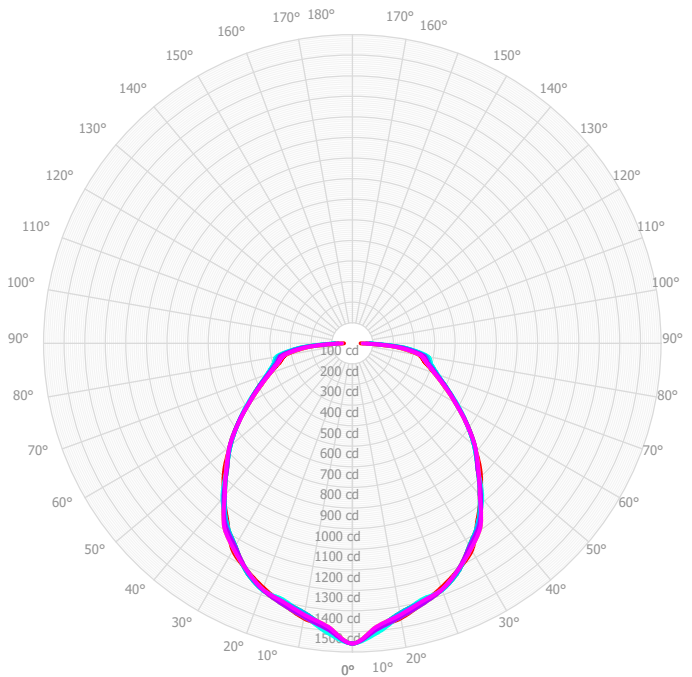
Based on 80 CRI

DIMENSIONS



PHOTOMETRICS

BLWD-4FT-4L-840-L18



Mtg Height	Light Level	Beam Diameter
6.0 ft	40.5 fc	15.5 ft
8.0 ft	22.8 fc	20.7 ft
10.0 ft	14.6 fc	25.9 ft
12.0 ft	10.1 fc	31.1 ft
14.0 ft	7.4 fc	36.3 ft
16.0 ft	5.7 fc	41.4 ft