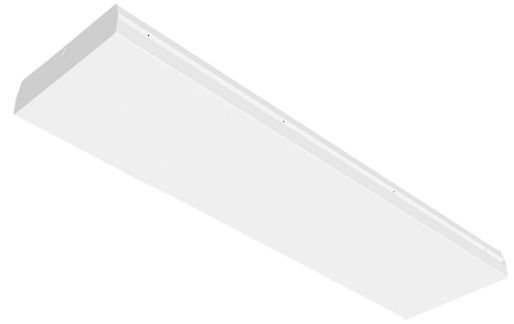


Project:
Type:
Date:
Product Code:
Approval:



BLWD

The BLWD is an LED wrap fixture designed for surface and suspended mounting. It is well suited for use in office spaces, hallways, and applications where existing luminaires can be replaced with a new energy efficient LED fixture while covering existing ceiling lines and unpainted areas.

FEATURES

- L70 of over 125,000 hours
- Hinged frosted diffuser
- Fixture lensing provides an even light distribution through the use of 120 degree angle LED chips and a specially designed extruded lens
- 0 - 10V dimming standard

OPTIONS

- Available in 3000K, 3500K, 4000K, 5000K, and 6500K
- Lumen packages are available from 2,000L to 6,000L
- 90 CRI available
- Bluetooth and Wireless mesh networks controls

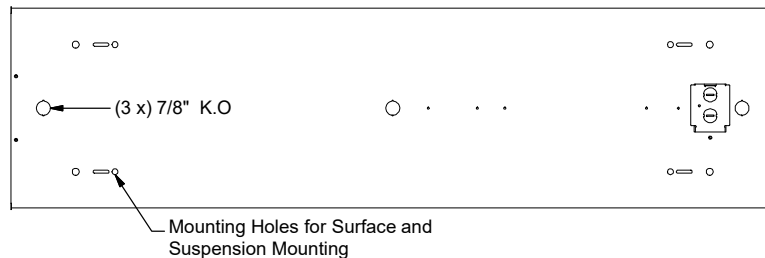
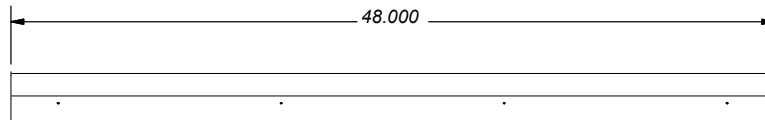
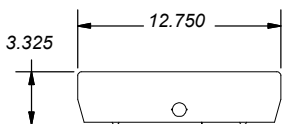
APPLICATIONS

- Hospitals
- Office
- Schools

OPERATING TEMPERATURE

- -20°C to 35°C

PRODUCT DIMENSIONS



OPTICS

High-efficiency frosted diffuser maximizes light distribution while providing diffusion of LED point sources.

ELECTRICAL

All components are UL recognized. The fixture is available in 120 - 277V and 347V.

MOUNTING

Holes provided for surface and suspended mounting.

CONSTRUCTION

- Pre-painted white steel fixture components are precision bent for added strength and rigidity
- Access panel provided for easy wiring
- Shallow fixture design for ease of installation and a clean professional look

APPROVALS

- ETL Listed

WARRANTY

- Standard 5 year system, and 10 year LED warranty

Specifications may change without notice
Standard tolerances apply
Drawings aren't to scale



PRODUCT KEY

Fixture Type	Fixture Size ²	Lumen Output	CRI	Color Temp	Driver Voltage	Options
BLWD	4'					

2	8 - 80 CRI	30 - 3000 K	UNV - 120-277V
3	9 - 90 CRI	35 - 3500 K	347 - 347V
4		40 - 4000 K	
5		50 - 5000 K	
6		65 - 6500 K	

Controls

- B11 - 0-10V Dimming Leads
- B12 - Line Voltage Dimming
- B17 - 10 Watt Battery Back Up
- B** - Other Options Available
- WC** - Wireless Controls

Colours

- Blank - White Low-Gloss, Matte Finish
- C5 - Black Low-Gloss, Matte Finish
- C10 - Silver Matte Finish
- C** - Other Options Available

Packaging

- P0 - Bulk Packaging
- P** - Other Options Available

** - Consult BJ Take for more fixture options

xx - Specify Length

1 - Custom cord lengths are available

2 - Custom Fixture lengths are available

Lenses

- Blank - Frosted Acrylic Lens

Cords

- W3xx - 16/3 White Cord¹
- W4xx - 16/3 Black Cord¹
- W** - Other Options Available

XX	Cord Length
06	6 Ft
10	10 Ft
15	15 Ft
20	20 Ft

Example: W306 - 6 foot white cord

Mounting

- M1 - V-Hangers
- M2xx - V-Hangers & Aircraft Cables
- M3xx - Y-Toggle Aircraft Cables
- M24 - Single Pendant Mount
- M** - Other Options Available

XX	Aircraft Length
05	5 Ft
10	10 Ft
15	15 Ft
20	20 Ft

Example: M310 - 10 foot aircraft cables

Wire Guard

- G1 - White Wire Guard

Motion Sensor

- W26 - Photocell Motion Sensor
- W53xxx - On/Off Motion Sensor
- W57 - Dimming Motion Sensor (Dims to 50% and stays at 50% output when unoccupied)
- WX16 - Microwave Dimmable Sensor
- W** - Other Options Available

WATTAGE CHART

Length	Lumen Output	Actual Lumen Output	Fixture Wattage	Lumens per Watt
4'	2	2124	17	123.06
	3	3136	24	130.67
	4	4148	32	129.63
	5	5160	40	129.00
	6	6172	48	128.58

Based on UNV Voltage

Based on 4000K

Based on 80 CRI