



Project

Product Code

Type

Date

Approval



The BLVN is a narrow LED linear vapour proof fixture designed for surface and suspended mounting. It is well suited for indoor or outdoor use where there is high probability of moisture and exposure to dust. Its unique, IP67 certified body makes it ideal in environments where vapour proof efficiency and performance are a factor

Overview

- Fibreglass body with a continuous poured neoprene gasket
- L70 of 98,000 hours+
- L90 of 30,000 hours+
- 0 - 10V dimming standard

Construction

- Manufactured in Ontario, Canada
- Fibreglass enclosure with neoprene gasket ensures a dust and water-resistant seal
- Frosted acrylic lens for even light distribution

Electrical

- ETL certified to UL Canada and United States standards
- Available in 120-277V and 347V

Optics

- High-efficiency diffuser maximizes light distribution while providing diffusion of LED point sources and reducing glare

Mounting

- Can be suspended, surface, pendant or wall mounted

Options

- 80 CRI standard - 90 CRI, 95+CRI available
- Lumen packages are available from 2,500L to 11,500L
- Available in 3000K, 3500K, 4000K, 5000K, and 6500K
- Pendant Mount
- Wireless controls
- IP66 rated motion sensor available
- Polycarbonate and acrylic lenses

NOTES

↓ ↓ ↓ NOMENCLATURE

Fixture Type	Fixture Size	Lumen Output	CRI	Color Temp	Driver Voltage	Options
BLVN	-	-	L -	-	-	-

2.5	8 - 80 CRI	30 - 3000 K	UNV - 120-277V
3.5	9 - 90 CRI	35 - 3500 K	347 - 347V
4.5		40 - 4000 K	
5.5		50 - 5000 K	
6.5			
7.5			
8.5			
9.5			
10.5			
11.5			

4'

Lenses

L16	- Ribbed Frosted Acrylic Lens
L17	- Ribbed Clear Acrylic Lens
L26	- Ribbed Clear Polycarbonate Lens*
L61	- Smooth Clear Acrylic Lens
L63	- Smooth Frosted Acrylic Lens
L64	- Ribbed Frosted Polycarbonate Lens
L65	- Smooth Clear Polycarbonate Lens
L65	- Smooth Frosted Polycarbonate Lens

Cords (Specify Length)

W3xx	- 16/3 White Cord
W4xx	- 16/3 Black Cord
W**	- Other Options Available

XX	Cord Length
06	6 Ft
10	10 Ft
15	15 Ft
20	20 Ft

Example: W306 - 6 foot white cord

Fastener Options

Blank	- Standard White Nylon Clips
H4	- Stainless Steel Latch

Motion Sensor

W12	- Standard Motion Sensor
W26	- Motion Sensor with Photocell
W30	- IP66 Rated Motion Sensor
WX16	- Microwave Dimmable Sensor

Controls

B11	- 0-10V Dimming Leads
B12	- Line Voltage Dimming
B17	- 10 Watt Battery Back Up
B**	- Other Options Available
WC**	- Wireless Controls

Packaging

P0	- Bulk Packaging
P**	- Other Options Available

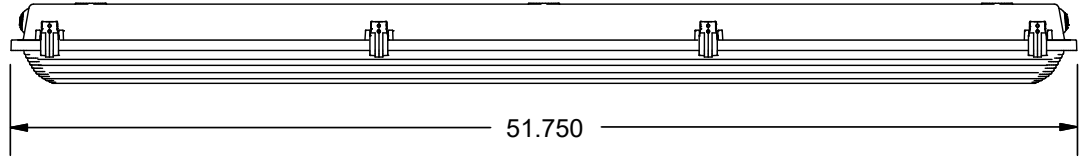
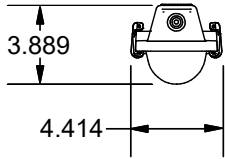
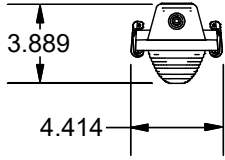
Mounting

Blank	- Standard Mounting Brackets (2pk)
M3xx	- Y-Toggle Aircraft Cables
M24	- Single Pendant Mount
M33	- Dual Pendant Mounting Brackets
M**	- Other Options Available

XX	Aircraft Length
05	5 Ft
10	10 Ft
15	15 Ft
20	20 Ft

Example: M310 - 10 foot aircraft cables

DIMENSIONS



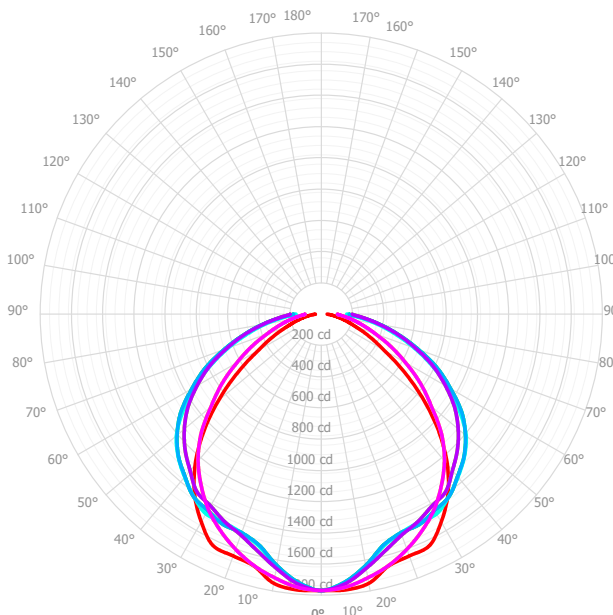
SPECIFICATIONS

Size	Lumen Output	Actual Lumen Output	Fixture Wattage	Lumens per Watt
4'	2.5	2363	17.7	133.5
	3.5	3337	25.1	133.1
	4.5	4305	32.5	132.6
	5.5	5266	39.8	132.2
	6.5	6221	47.2	131.7
	7.5	7169	54.6	131.3
	8.5	8110	62.0	130.8
	9.5	9045	69.4	130.4
	10.5	9973	76.7	130.0
	11.5	10894	84.1	129.5

Based on UNV Voltage
Based on 4000K
Based on 80 CRI

Size	Lumen Output	Actual Lumen Output	Fixture Wattage	Lumens per Watt
4'	2.5	2319	17.7	131.0
	3.5	3272	25.1	130.6
	4.5	4219	32.4	130.1
	5.5	5159	39.8	129.7
	6.5	6093	47.1	129.3
	7.5	7021	54.5	128.8
	8.5	7942	61.9	128.4
	9.5	8857	69.2	128.0
	10.5	9765	76.6	127.5
	11.5	10659	83.9	127.0

PHOTOMETRICS



0°-180°	Red
22.5°-202.5°	Yellow
45°-225°	Green
67.5°-247.5°	Cyan
90°-270°	Blue
112.5°-292.5°	Purple
135°-315°	Magenta
157.5°-337.5°	Pink

Mtg Height	Light Level	Beam Diameter
6.0 ft	49.2 fc	13.9 ft
8.0 ft	27.7 fc	18.6 ft
10.0 ft	17.7 fc	23.2 ft
12.0 ft	12.3 fc	27.9 ft
14.0 ft	9.0 fc	32.5 ft
16.0 ft	6.9 fc	37.2 ft