

# BLSPM

LED Mini Linear Strip Fixture



Project

Product Code

Type

Date

Approval



The BLSPM is an LED mini linear strip fixture designed for surface and suspended mounting. It is well suited for indoor use where high efficiency, row-mountable task lighting is required. Its mini strip design and modern profile make it an ideal fixture for task lighting applications

## Overview

- Narrow strip design allows for a sleek and modern look
- Specially designed extruded lens
- L70 of 99,000 hours+
- L90 of 30,000 hours+
- 0 - 10V dimming standard

## Construction

- Manufactured in Ontario, Canada
- Precision bent cold-rolled steel components
- Steel end caps for added rigidity
- Powder coated for a clean look and durable finish
- Access panel provided for easy wiring
- Shallow fixture design for ease of installation and a clean, professional look

## Electrical

- ETL certified to UL Canada and United States standards
- Available in 120-277V and 347V

## Optics

- High-efficiency diffuser maximizes light distribution while providing diffusion of LED point sources and reducing glare

## Mounting

- Holes provided for surface and suspended mounting
- Knock-outs for row-mounting

## Options

- 80 CRI standard - 90 CRI, 95+CRI available
- Available in custom lengths
- Lumen packages are available from 1,125L to 23,000L
- Row-mounting available
- Available in 3000K, 3500K, 4000K, 5000K, and 6500K
- Wireless controls

## NOTES

### ↓ ↓ ↓ NOMENCLATURE

Fixture Type	Fixture Size	Lumen Output	CRI	Color Temp	Driver Voltage	Options
BLSPM	-	-	L	-	-	- L18

1'	1.125	8 - 80 CRI	30 - 3000 K	UNV - 120-277V
	1.375	9 - 90 CRI	35 - 3500 K	347 - 347V
2'	1.75		40 - 4000 K	
	2.25		50 - 5000 K	
	2.75		65 - 6500 K	
	2.5			
4'	3.5			
	4.5			
	5.5			
	6.5			
	7.5			
	8.5			
8'	9.5			
	5			
	7			
	9			
	11			
	13			
	15			
	17			
	19			

#### Lenses

L18 - Frosted Lens

#### Cords

W3xx - 16/3 White Cord

W4xx - 16/3 Black Cord

W\*\* - Other Options Available

XX	Cord Length
06	6 Ft
10	10 Ft
15	15 Ft
20	20 Ft

Example: W306 - 6 foot white cord

#### Mounting

M1 - V-Hangers

M2xx - V-Hangers & Aircraft Cables

M3xx - Y-Toggle Aircraft Cables

M24 - Single Pendant Mount

M\*\* - Other Options Available

XX	Aircraft Length
05	5 Ft
10	10 Ft
15	15 Ft
20	20 Ft

Example: M310 - 10 foot aircraft cables

#### Motion Sensor

W26 - Photocell Motion Sensor

W53xxx - On/Off Motion Sensor

W57 - Dimming Motion Sensor (Dims to 50% and stays at 50% output when unoccupied)

WX16 - Microwave Dimmable Sensor

W\*\*

#### Controls

B11

B12

B17

B\*\*

WC\*\* - Wireless Controls

#### Colours

Blank - White Low-Gloss, Matte Finish

C5 - Black Low-Gloss, Matte Finish

C10 - Silver Matte Finish

C\*\* - Other Options Available

#### Packaging

P0 - Bulk Packaging

P\*\* - Other Options Available

#### Reflector

R1 - White Steel Reflectors

R21 - Asymmetric White Steel Reflectors

R\*\* - Other Options Available

#### Row Mounting

M54 - Row Mount Body

W22-XY - Molex Row Mounting Wiring

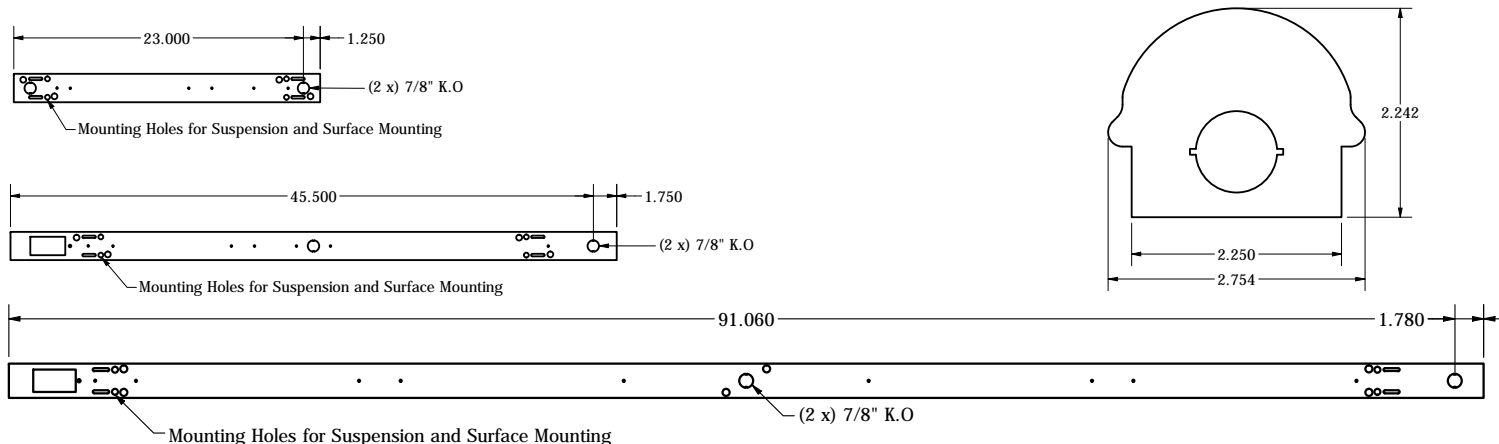
\*\* - Consult BJ Take for more fixture options

xx - Specify Length

1 - Custom cord lengths are available

2 - See page 3 for row mounting wiring charts

## DIMENSIONS



\*specifications may change without notice

\*\*standard tolerances apply

\*\*\*NOT TO SCALE

## SPECIFICATIONS

### WATTAGE CHART

BLSPM Efficiency Wattage Chart

Size	Lumen Output	Actual Lumen Output	Fixture Wattage	Lumens per Watt	Size	Lumen Output	Actual Lumen Output	Fixture Wattage	Lumens per Watt	Size	Lumen Output	Actual Lumen Output	Fixture Wattage	Lumens per Watt
2'	1.75	1759	12.7	138.5	4'	2.5	2530	17.9	141.3	8'	5.0	5053	35.7	141.5
	2.25	2261	16.4	137.9		3.5	3566	25.4	140.4		7.0	7122	50.7	140.5
	2.75	2764	20.0	138.2		4.5	4588	32.9	139.5		9.0	9163	65.6	139.7
Based on UNV Voltage Based on 4000K Based on 80 CRI						5.5	5596	40.4	138.5		11.0	11176	80.1	139.5
						6.5	6589	47.9	137.6		13.0	13160	95.6	137.7
						7.5	7569	55.3	136.9		15.0	15117	110.5	136.8
						8.5	8535	62.8	135.9		17.0	17046	125.5	135.8
						9.5	9485	70.3	134.9		19.0	18943	140.4	134.9