



Project

Product Code

Type

Date

Approval

This superior-grade LED high bay is designed for both surface and suspended mounting. It is ideal for indoor use, where energy-efficiency, performance and ease of maintenance is essential. With its rugged design and superior light paths the BLHN is an ideal fixture for high bay applications

Overview

- L70 of 132,000 hours+
- L90 of 42,000 hours+
- 0 - 10V dimming standard

Construction

- Manufactured in Ontario, Canada
- Precision bent cold-rolled steel components
- Steel end caps for added rigidity
- Powder coated for a clean look and durable finish
- Access panel provided for easy wiring
- Shallow fixture design provides a clean appearance for many environments

Electrical

- Operating Temperature of **-40°C to +55°C**
- ETL certified to UL Canada and United States standards.
- Available in 120-277V, 347V and 480V

Optics

- High-efficiency diffuser maximizes light distribution while providing diffusion of LED point sources and reducing glare

Mounting

- Holes provided for v-hangers, s-hook chain-mounting or aircraft cable.
- Pendant mounting and surface mounting is available

Options

- 80 CRI standard - 90 CRI, 95+CRI available
- Motion sensor options available
- Lumen packages are available from 10,000L to 48,000L
- Wire guard
- Available in 3000K, 3500K, 4000K, 5000K, and 6500K
- Bluetooth and wireless mesh networks controls

NOTES

↓ ↓ ↓ NOMENCLATURE

Fixture Type	Fixture Size	Lumen Output	L	CRI	Color Temp	Driver Voltage	Options
BLHN	-	-	L	-	-	-	-

2'	10	8 - 80 CRI	30 - 3000 K	UNV - 120-277V
	12	9 - 90 CRI	35 - 3500 K	347 - 347V
	14		40 - 4000 K	480 - 480V
	16		50 - 5000 K	
	18		65 - 6500 K	
	20			
	22			
4'	24			
	20			
	24			
	28			
	32			
	36			
	40			
	44			
	48			

Wire Guard

G1 - White Wire Guard

Motion Sensor

W26 - Photocell Motion Sensor

W53xxx - On/Off Motion Sensor

W57 - Dimming Motion Sensor (Dims to 50% and stays at 50% output when unoccupied)

WX16 - Microwave Dimmable Sensor

W** - Other Options Available

Controls

B11 - 0-10V Dimming Leads

B17 - Battery Back Up

B** - Other Options Available

WC** - Wireless Controls

Colours

Blank - Pre-painted Steel

C5 - Black Low-Gloss, Matte Finish

C** - Other Options Available

Packaging

P0 - Bulk Packaging

P** - Other Options Available

** - Consult BJ Take for more fixture options

xx - Specify Length

1 - Custom cord lengths are available

Lenses

L0 - No Lens

L19 - Frosted Lens

Cords

W3xx - 16/3 White Cord

W4xx - 16/3 Black Cord

W** - Other Options Available

XX	Cord Length
06	6 Ft
10	10 Ft
15	15 Ft
20	20 Ft

Example: W306 - 6 foot white cord

Mounting

M1 - V-Hangers

M2xx - V-Hangers & Aircraft Cables

M3xx - Y-Toggle Aircraft Cables

M24 - Single Pendant Mount

M25 - Surface Mount Brackets

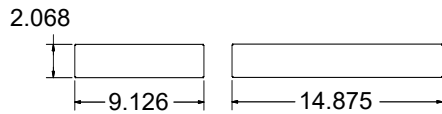
M** - Other Options Available

XX	Aircraft Length
05	5 Ft
10	10 Ft
15	15 Ft
20	20 Ft

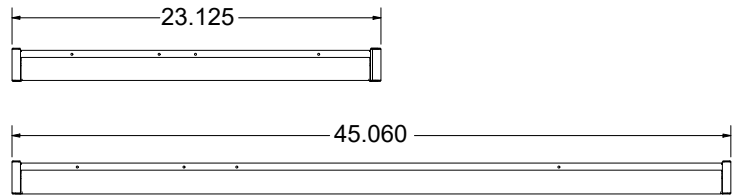
Example: M310 - 10 foot aircraft cables

DIMENSIONS

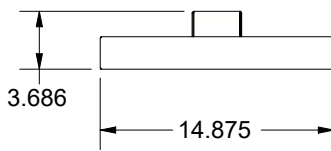
End Views



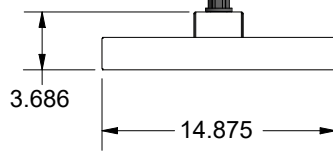
Side Views



M25 - Surface Mount Bracket



M24 - Pendant Mount



Specifications may change without notice
Standard tolerances apply
Drawings aren't to scale

SPECIFICATIONS

BLHN Efficiency Wattage Chart

Size	Lumen Output	Actual Lumen Output	Fixture Wattage	Lumens per Watt	Size	Lumen Output	Actual Lumen Output	Fixture Wattage	Lumens per Watt
2'	10	9,312	71.0	131.2	4'	20	18,666	141.3	132.1
	12	11,184	82.9	134.9		24	22,418	165.1	135.8
	14	13,144	94.9	138.5		28	26,346	188.8	139.5
	16	15,191	106.8	142.2		32	30,448	212.6	143.2
	18	17,658	125.0	141.3		36	34,787	252.9	137.5
	20	19,129	135.5	141.1		40	37,683	274.2	137.4
	22	20,597	146.1	141.0		44	40,576	295.6	137.3
	24	22,062	156.6	140.9		48	43,462	316.9	137.2

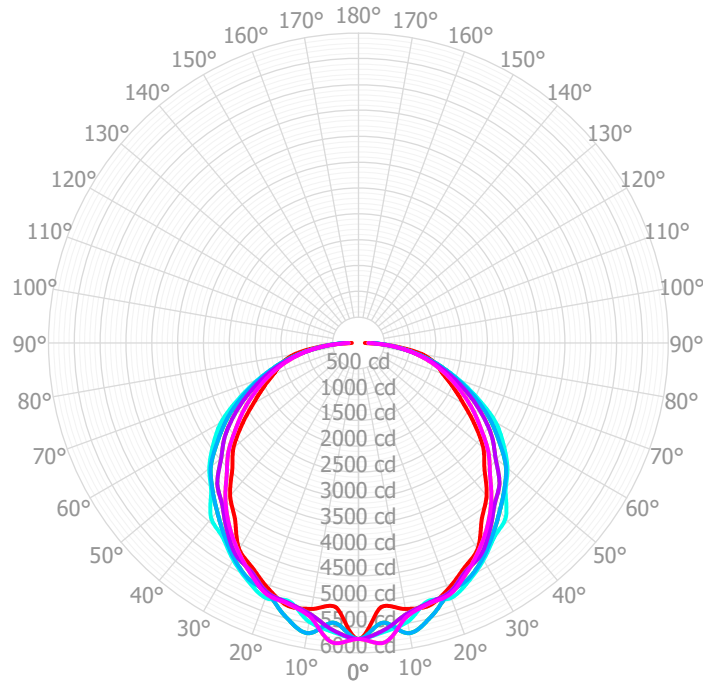
Based on UNV Voltage

Based on 4000K

Based on 80 CRI

PHOTOMETRICS

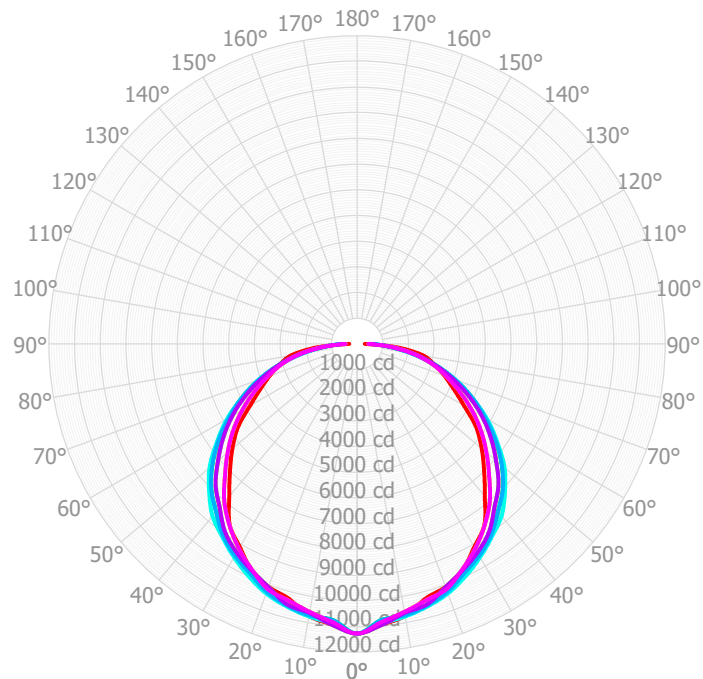
BLHN-4'-18L-840-L19



0°-180°	—
22.5°-202.5°	—
45°-225°	—
67.5°-247.5°	—
90°-270°	—
112.5°-292.5°	—
135°-315°	—
157.5°-337.5°	—

Mtg Height	Light Level	Beam Diameter
6.0 ft	159.2 fc	15.9 ft
8.0 ft	89.6 fc	21.2 ft
10.0 ft	57.3 fc	26.6 ft
12.0 ft	39.8 fc	31.9 ft
14.0 ft	29.2 fc	37.2 ft
16.0 ft	22.4 fc	42.5 ft

BLHN-4'-36L-840-L19



0°-180°	—
22.5°-202.5°	—
45°-225°	—
67.5°-247.5°	—
90°-270°	—
112.5°-292.5°	—
135°-315°	—
157.5°-337.5°	—

Mtg Height	Light Level	Beam Diameter
6.0 ft	313.4 fc	17.2 ft
8.0 ft	176.3 fc	23.0 ft
10.0 ft	112.8 fc	28.7 ft
12.0 ft	78.3 fc	34.5 ft
14.0 ft	57.6 fc	40.2 ft
16.0 ft	44.1 fc	45.9 ft