

Project:
Type:
Date:
Product Code:
Approval:



BRLR

Recessed LED retrofit kit, offering up to 50% in energy savings. It has been designed to convert existing 2x4, 2x2, and 1x4 recessed fixtures from T8 or T12 to LED. Its flexibility and simple installation make it easy to take advantage of improved energy-efficiency and performance.

FEATURES

- Has a full range of voltage options from 120-277V and 347V
- L70 of 200,000 hours
- Fixture lensing provides an even light distribution through the use of 120 degree angle LED chips and a specially designed lens

OPTIONS

- 0 – 10V dimming standard
- Available in 3000K, 3500K, 4000K, and 5000K
- Lumen packages are available in 2,000, 3,000, 4,000, 5,000 and 6,000 lumens

APPLICATIONS

- Existing fluorescent recessed fixtures

WARRANTY

- Standard 5 year system, and 10 year LED warranty

OPTICS

High-efficiency diffuser maximizes light distribution while providing diffusion of LED point sources.

ELECTRICAL

All components are UL recognized

MOUNTING

Holes provided for mounting inside existing fluorescent recessed fixtures using self-tapping screws.

CONSTRUCTION

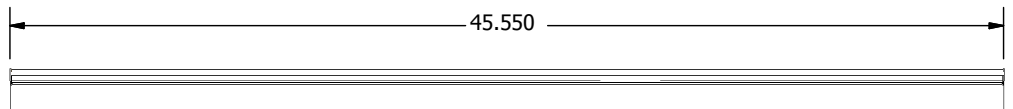
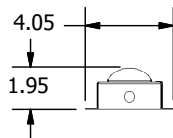
- Fixture materials are precision bent for added strength and rigidity
- Shallow design for ease of installation and a clean, professional look.

APPROVAL

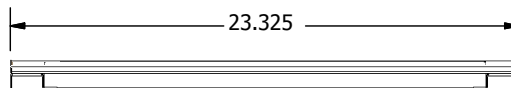
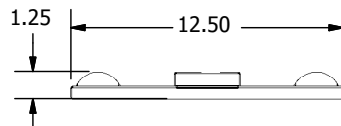
- ETL Certified
- DLC Certified

PRODUCT DIMENSIONS

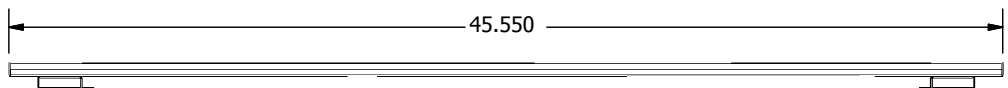
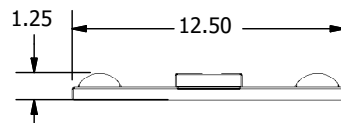
14 Dimensions



22 Dimensions



24 Dimensions



SPECIFICATIONS MAY CHANGE WITHOUT NOTICE



PRODUCT KEY

Retrofit Type	Fixture Size	Lumen Output	CRI & Colour Temperature	Driver Voltage
BRLR	-	-	L -	-

14 22	2	830	UNV
	2.5	835	
	3	840	
	3.5	850	
	4		
24	4		
	4.5		
	5		
	5.5		
	6		

BRLR Wattages								
Length	Lumens	Wattage	Length	Lumens	Wattage	Length	Lumens	Wattage
14	2	15.7	22	2	15.7	24	4	31.4
	2.5	20.1		2.5	20.1		4.5	35.8
	3	24.9		3	24.9		5	40.3
	3.5	29.7		3.5	29.7		5.5	44.9
	4	34.9		4	34.9		6.0	49.7

* Based on UNV voltage
 * Based on 4000K
 * Actual wattages may vary