



Project

Product Code

Type

Date

Approval



The BRLR is an LED retrofit kit offering up to 50% in energy savings over a traditional T8 fixture. It has been designed to convert existing 2x2, 1x4 and 2x4 recessed troffers from T8 or T12 to LED. Its flexibility and simple installation make it easy to take advantage of improved energy-efficiency and performance

Overview

- L70 of ##,000 hours+
- L90 of ##,000 hours+
- 0 - 10V dimming standard
- 10 minute installation time

Construction

- Manufactured in Ontario, Canada
- Pre-painted white steel fixture components are precision bent for added strength and rigidity
- Shallow design for ease of installation and a clean, professional look

Electrical

- ETL certified to UL Canada and United States standards
- Available in 120 - 277V and 347V

Optics

- High-efficiency frosted diffuser maximizes light distribution while providing diffusion of LED point sources

Mounting

- Holes provided for mounting inside existing fluorescent recessed troffers using self-tapping screws

Options

- 80 CRI standard - 90 CRI, 95+CRI available
- Lumen packages are available from 2,000L to 6,000L
- Available in 3000K, 3500K, 4000K, 5000K, and 6500K

NOTES

↓ ↓ ↓ NOMENCLATURE

Fixture Type	Fixture Size	Lumen Output	CRI	Color Temp	Driver Voltage	Options
BRLR		L				
	14, 22	2	8 - 80 CRI	30 - 3000 K	UNV - 120-277V	
		2.5	9 - 90 CRI	35 - 3500 K	347 - 347V	
		3		40 - 4000 K		
		3.5		50 - 5000 K		
		4		65 - 6500 K		
		4.5				
		5				
	24	3				
		3.5				
		4				
		4.5				
		5				
		5.5				
		6				
		7				
		8				
		9				
		10				

Lenses

Blank - Frosted Acrylic Lens

Controls

B11 - 0-10V Dimming Leads

WC22 - JDRF - ZigBee

WC** - Other Options Available

Emergency Driver

B17 - Emergency Driver

Packaging

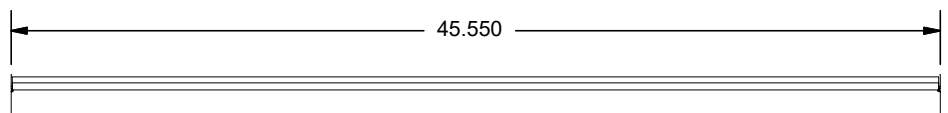
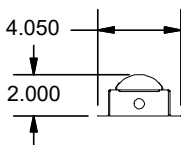
P0 - Bulk Packaging

P** - Other Options Available

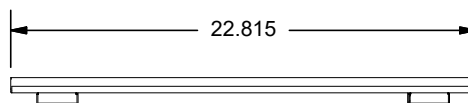
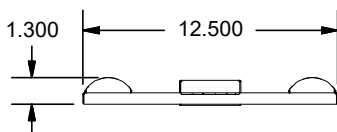
** - Consult BJ Take for more fixture options

📐 DIMENSIONS

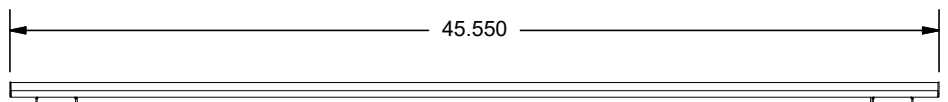
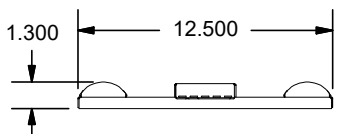
1x4 Dimensions



2x2 Dimensions



2x4 Dimensions



SPECIFICATIONS

BRLR-14 Wattage Chart				
Size	Lumen Output	Actual Lumen Output	Fixture Wattage	Lumens per Watt
14	2	2120	17.52	121.0
	2.5	2634	21.70	121.4
	3	3147	25.87	121.7
	3.5	3661	30.05	121.9
	4	4130	35.80	115.4

BRLR-22 Wattage Chart				
Size	Lumen Output	Actual Lumen Output	Fixture Wattage	Lumens per Watt
22	2	2071	17.45	118.7
	2.5	2573	21.61	119.8
	3	3075	25.77	119.3
	3.5	3577	29.93	119.5
	4	4079	34.08	119.7

BRLR-24 Wattage Chart				
Size	Lumen Output	Actual Lumen Output	Fixture Wattage	Lumens per Watt
24	4	4384	34.03	128.9
	4.5	4804	37.71	127.4
	5	5224	41.38	126.3
	5.5	5644	45.06	125.3
	6	6064	48.74	124.4

Based on UNV Voltage
 Based on 4000K
 Based on 80 CRI