



Project

Product Code

Type

Date

Approval



The BLVN is a narrow LED linear vapour proof fixture designed for surface and suspended mounting. It is well suited for indoor or outdoor use where there is high probability of moisture and exposure to dust. Its unique, IP67 certified body makes it ideal in environments where vapour proof efficiency and performance are a factor

Overview

- Fibreglass body with a continuous poured neoprene gasket
- L70 of 190,000 hours+
- L90 of 55,000 hours+
- 0 - 10V dimming standard

Construction

- Manufactured in Ontario, Canada
- Fibreglass enclosure with neoprene gasket ensures a dust and water-resistant seal
- Frosted acrylic lens for even light distribution

Electrical

- ETL certified to UL Canada and United States standards
- Available in 120-277V and 347V

Optics

- High-efficiency diffuser maximizes light distribution while providing diffusion of LED point sources and reducing glare

Mounting

- Can be suspended, surface, pendant or wall mounted

Options

- 80 CRI standard - 90 CRI, 95+CRI available
- Lumen packages are available from 2,500L to 11,500L
- Available in 3000K, 3500K, 4000K, 5000K, and 6500K
- Pendant Mount
- Wireless controls
- IP66 rated motion sensor available
- Polycarbonate and acrylic lenses

NOTES

↓ ↓ ↓ NOMENCLATURE

Fixture Type	Fixture Size	Lumen Output	CRI	Color Temp	Driver Voltage	Options
BLVN	-	-	L -	-	-	-

2.5	8 - 80 CRI	30 - 3000 K	UNV - 120-277V
3.5	9 - 90 CRI	35 - 3500 K	347 - 347V
4.5		40 - 4000 K	
5.5		50 - 5000 K	
6.5			
7.5			
8.5			
9.5			
10.5			
11.5			

4'

Lenses

- L16 - Ribbed Frosted Acrylic Lens
- L17 - Ribbed Clear Acrylic Lens
- L26 - Ribbed Clear Polycarbonate Lens*
- L61 - Smooth Clear Acrylic Lens
- L63 - Smooth Frosted Acrylic Lens
- L64 - Ribbed Frosted Polycarbonate Lens
- L65 - Smooth Clear Polycarbonate Lens
- L65 - Smooth Frosted Polycarbonate Lens

Cords (Specify Length)

- W3xx - 16/3 White Cord
- W4xx - 16/3 Black Cord
- W** - Other Options Available

XX	Cord Length
06	6 Ft
10	10 Ft
15	15 Ft
20	20 Ft

Example: W306 - 6 foot white cord

Fastener Options

- Blank - Standard White Nylon Clips
- H4 - Stainless Steel Latch

Motion Sensor

- W12 - Standard Motion Sensor
- W26 - Motion Sensor with Photocell
- W30 - IP66 Rated Motion Sensor
- WX16 - Microwave Dimmable Sensor

Controls

- B11 - 0-10V Dimming Leads
- B12 - Line Voltage Dimming
- B17 - 10 Watt Battery Back Up
- B** - Other Options Available
- WC** - Wireless Controls

Packaging

- P0 - Bulk Packaging
- P** - Other Options Available

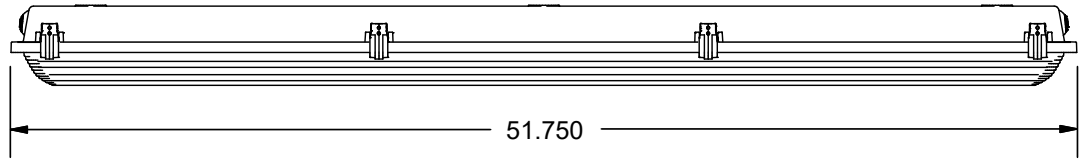
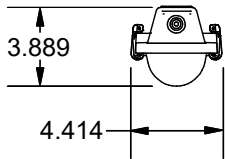
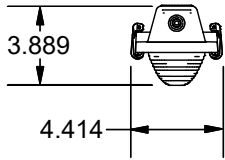
Mounting

- Blank - Standard Mounting Brackets (2pk)
- M3xx - Y-Toggle Aircraft Cables
- M24 - Single Pendant Mount
- M33 - Dual Pendant Mounting Brackets
- M** - Other Options Available

XX	Aircraft Length
05	5 Ft
10	10 Ft
15	15 Ft
20	20 Ft

Example: M310 - 10 foot aircraft cables

DIMENSIONS



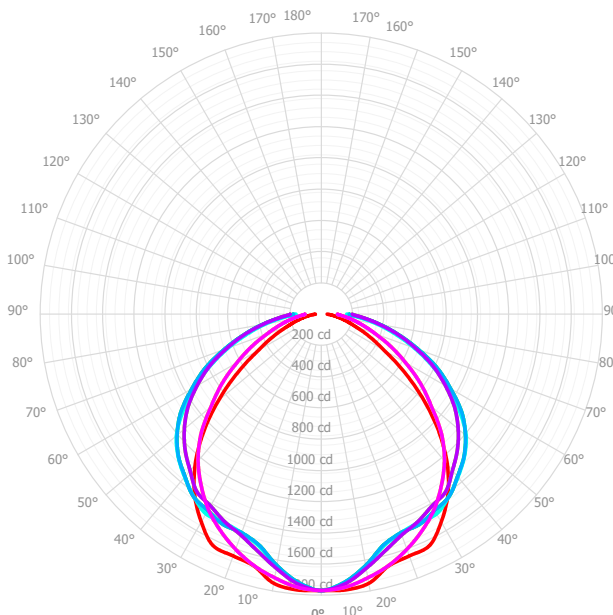
SPECIFICATIONS

Size	Lumen Output	Actual Lumen Output	Fixture Wattage	Lumens per Watt
4'	2.5	2363	17.7	133.5
	3.5	3337	25.1	133.1
	4.5	4305	32.5	132.6
	5.5	5266	39.8	132.2
	6.5	6221	47.2	131.7
	7.5	7169	54.6	131.3
	8.5	8110	62.0	130.8
	9.5	9045	69.4	130.4
	10.5	9973	76.7	130.0
	11.5	10894	84.1	129.5

Based on UNV Voltage
Based on 4000K
Based on 80 CRI

Size	Lumen Output	Actual Lumen Output	Fixture Wattage	Lumens per Watt
4'	2.5	2319	17.7	131.0
	3.5	3272	25.1	130.6
	4.5	4219	32.4	130.1
	5.5	5159	39.8	129.7
	6.5	6093	47.1	129.3
	7.5	7021	54.5	128.8
	8.5	7942	61.9	128.4
	9.5	8857	69.2	128.0
	10.5	9765	76.6	127.5
	11.5	10659	83.9	127.0

PHOTOMETRICS



0°-180°	Red
22.5°-202.5°	Yellow
45°-225°	Light Green
67.5°-247.5°	Green
90°-270°	Cyan
112.5°-292.5°	Blue
135°-315°	Purple
157.5°-337.5°	Magenta

Mtg Height	Light Level	Beam Diameter
6.0 ft	49.2 fc	13.9 ft
8.0 ft	27.7 fc	18.6 ft
10.0 ft	17.7 fc	23.2 ft
12.0 ft	12.3 fc	27.9 ft
14.0 ft	9.0 fc	32.5 ft
16.0 ft	6.9 fc	37.2 ft