

Project

Product Code

Type

Date

Approval

The BLRE is a recessed LED strip fixture. It is ideal for indoor use, where energy-efficiency, performance and ease of maintenance is essential. Its narrow recessed design makes it ideal for interior perimeter lighting

Overview

- L70 of ##,000 hours+
- L90 of ##,000 hours+
- 0 - 10V dimming standard

Construction

- Manufactured in Ontario, Canada
- Precision bent cold-rolled steel components
- Powder coated for a clean look and durable finish
- Shallow fixture design for ease of installation and a clean professional look

Electrical

- ETL certified to UL Canada and United States standards
- Available in 120 - 277V and 347V

Optics

- High-efficiency diffuser maximizes light distribution while providing full diffusion of LED point sources

Mounting

- Can be row mounted in a recessed drywall or t-bar application
- Holes provided for chain or hanger wire mounting support for T-Bar ceilings

Options

- 80 CRI standard - 90 CRI, 95+CRI available
- Flange kit for drywall ceiling
- Available in 3in and 6in widths
- Lumen packages are available from 1,000L to 8,000L
- Available in 3000K, 3500K, 4000K, 5000K, and 6500K

NOTES

⇅⇅⇅ NOMENCLATURE

Fixture Type	Fixture Width	Fixture Size	Lumen Output	CRI	Color Temp	Driver Voltage	Options
BLRE			L				
	3W	2'	1	8 - 80 CRI	30 - 3000 K	UNV - 120-277V	
	6W		2	9 - 90 CRI	35 - 3500 K	347 - 347V	
		4'	2		40 - 4000 K		
			3		50 - 5000 K		
			4		65 - 6500 K		
		8'	4				
			6				
			8				

Motion Sensor

- WX16 - Microwave Dimmable Senso
- W** - Other Options Availabl

Controls

- B11 - 0-10V Dimming Lead
- B12 - Line Voltage Dimmin
- B17 - 10 Watt Battery Back U
- B** - Other Options Availabl
- WC** - Wireless Control

Colours

- Blank - White Low-Gloss, Matte Finis
- C5 - Black Low-Gloss, Matte Finis
- C10 - Silver Matte Finis
- C** - Other Options Availabl

Lenses

- Blank - Frosted Acrylic Len
- L** - Other Options Availabl

Mounting

- Blank - Recessed T-Bar Flang
- H14 - Intergrated Drywall Flang
- H25 - Drywall Flange with Drywal Clamps
- H26 - Drywall Mud and Tape Flang

Packaging

- P0 - Bulk Packagin
- P** - Other Options Availabl

** - Consult BJ Take for more fixture options
 1 - Custom fixture widths are available
 2 - Custom fixture lengths are available
 3 - Custom lumen outputs are available

📄 SPECIFICATIONS

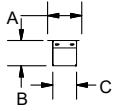
Length	Lumen Ouput	Fixture Wattage	Length	Lumen Ouput	Fixture Wattage	Length	Lumen Ouput	Fixture Wattage
2'	1.00	10.6	4'	2.0	21.2	8'	4.0	38.1
	2.00	22.7		3.0	30.3		6.0	60.7
				4.0	42.7		8.0	85.5

Based on UNV Voltage
 Based on 4000K
 Based on 80 CRI
 Based on a frosted lens

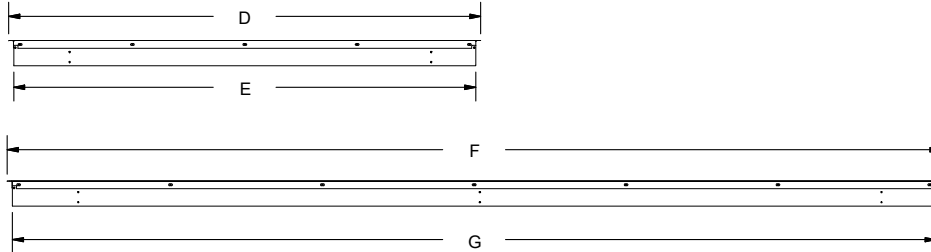
DIMENSIONS

Three Inch Wide

End View



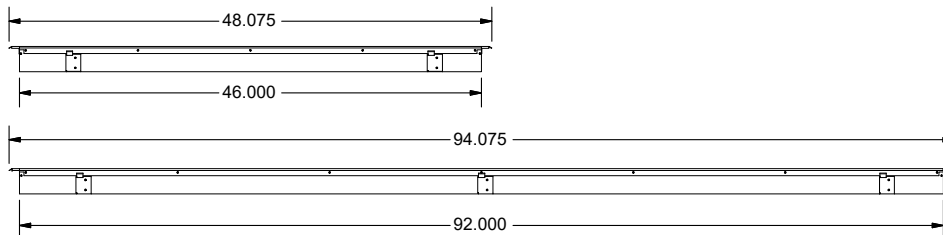
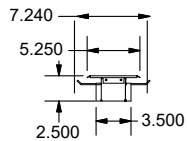
Side View



Fixture Option	A	B	C	D	E	F	G
Blank - Recessed T-Bar Flange	3.375	2.500	2.375	47.00	46.00	93.00	92.00
H14 - Integrated Drywall Flange	3.375	2.500	2.375	47.00	46.00	93.00	92.00
H26 - Drywall Mud and Tape Flange	3.625	2.500	2.375	47.25	46.00	93.25	92.00

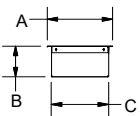
Three Inch Wide H25 - Drywall Flange with Drywall Clamps

Specifications may change without notice
Standard tolerances apply
Drawings aren't to scale

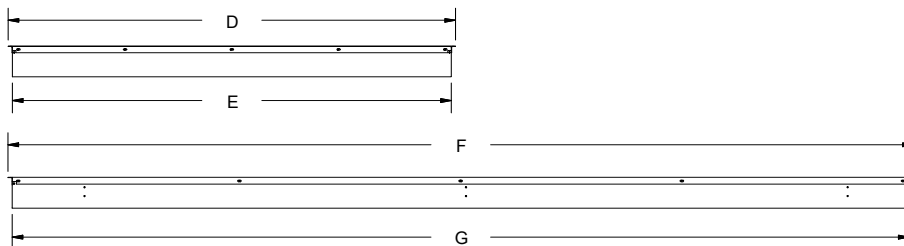


Six Inch Wide

End View



Side View



Fixture Option	A	B	C	D	E	F	G
Blank - Recessed T-Bar Flange	6.875	3.500	6.000	46.875	46.00	94.875	94.00
H14 - Integrated Drywall Flange	6.875	3.500	6.000	46.875	46.00	94.875	94.00
H26 - Drywall Mud and Tape Flange	7.125	3.500	6.000	47.125	46.00	95.125	94.00

Six Inch Wide H25 - Drywall Flange with Drywall Clamps

Specifications may change without notice
Standard tolerances apply
Drawings aren't to scale

