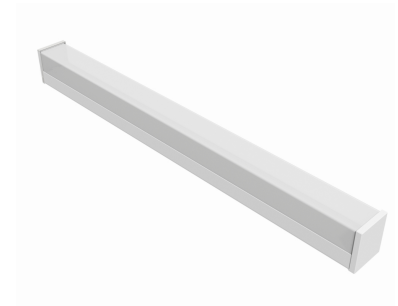


Project:
Type:
Date:
Product Code:
Approval:



BLMQ

The BLMQ is an LED linear fixture designed for wall mounting. It is well suited for indoor use where high efficiency, task lighting is required. Its narrow design and modern profile make it an ideal fixture for task lighting applications.

FEATURES

- Full range of voltage options from 120-277V and 347V
- Narrow design allows for a sleek and modern look
- Specially designed extruded lens
- 3000K, 3500K, 4000K and 5000K light colours available
- LEDs are rated for up to 100,000 hours (L70)

OPTIONS

- 0 - 10V dimming standard
- Lumen packages available from 2,000 to 4,000 Lumens

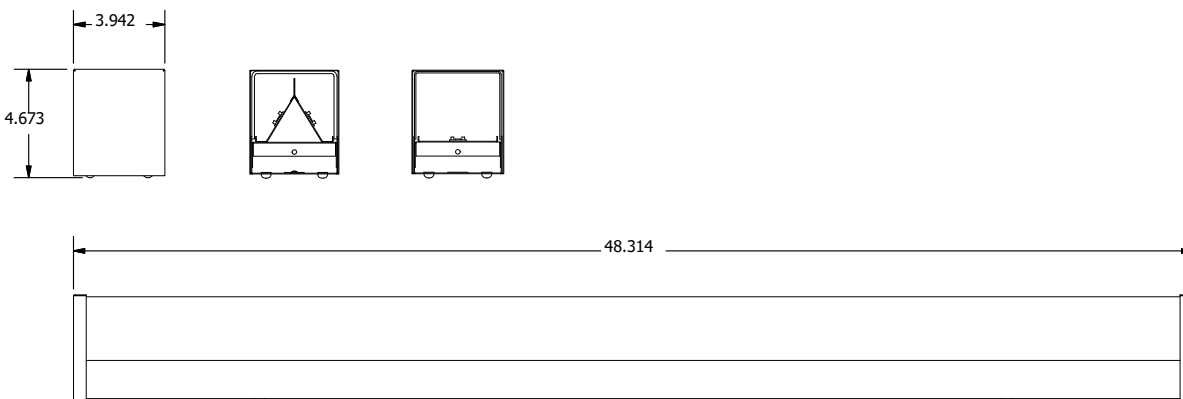
APPLICATIONS

- Displays
- Hospitals
- Task Lighting
- Retail Stores

OPERATING TEMPERATURE

- -20°C to 35°C

PRODUCT DIMENSIONS



OPTICS

High-efficiency diffuser maximizes light distribution while providing diffusion of LED point sources and reducing glare

ELECTRICAL

All components are UL recognized

MOUNTING

Holes provided for surface mounting

CONSTRUCTION

- Pre-painted white steel fixture components are precision bent for added strength and rigidity
- Spot welded steel end caps for added rigidity
- Access panel provided for easy wiring
- Shallow fixture design for ease of installation and a clean, professional look

APPROVALS

- Dry and Damp Environment Rated
- Adheres to ETL standards

*SPECIFICATIONS MAY CHANGE WITHOUT NOTICE

PRODUCT KEY

Fixture Type	UP Light	Down Light	CRI & Colour	Driver Voltage	Lens	Divider	Options
BLMQ	4'				L53		
	2.0	Blank	830	UNV		Blank	
	2.5	2.0	835	347		R17	
	3.0	2.5	840				
	4.0	3.0	850				

*4.0L is only available without Down Light

Options

<p>Switches S2 - Switch Pull-Chain - 3-Way S4 - Two Rocker Switches</p>	<p>Color Blank - White C5 - Matt Black C21 - Silk Grey</p>	<p>Lens L53 - Opal Lens</p>
<p>Down Light Blank - No down light required</p>	<p>*Consult BJ Take for more options</p>	<p>Divider Blank - No Divider required for just up light R17 - Up/Downlight Divider</p>

WATTAGE CHARTS

BLMQ Wattage Chart		
Length	Lumens	Wattage
4'	2.0	18
	2.5	22
	3.0	26

Note the total fixture wattage will depend on both the up light and down light selected.
Example: BFMQ-4'-2.5L-2.0L-840-UNV-L53-R17 is 49 watts

- *Based on UNV voltage
- *Based on 4000K
- *Actual wattages may vary