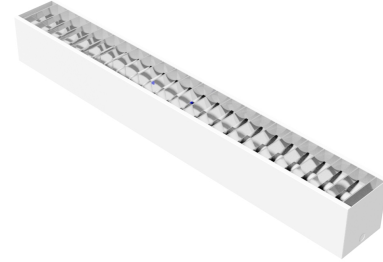


Project:
Type:
Date:
Product Code:
Approval:



BFSDV

The BFSDV is a fluorescent surface and suspended mount decorative fixture. With its linear design it is well suited for use in retail stores, corridors and classrooms.

Features

- Full range of voltage options from 120-277V and 347V
- High-reflectance white steel reflector standard

Options

- 4' and 8' lengths available
- Available in various colours (Consult Factory)
- Emergency Battery Back Up
- Reflectors available in pre-painted high-reflectance white steel, white aluminum and specular aluminum
- 1, 2, 3, 4 or 6 lamps
- Various lens and louver options available

Applications

- Classrooms
- Corridors
- Libraries
- Retail Stores

Approvals

- Dry and Damp Environment Rated
- ETL Listed

Optics

Powder coated body in high-reflectance white. Optional reflectors are available in high-reflectance white steel, white aluminum or specular aluminum. Various lens options offer a full range of flexibility and aesthetic appearance. T5 and T8 light sources are available.

Electrical

All components are UL recognized

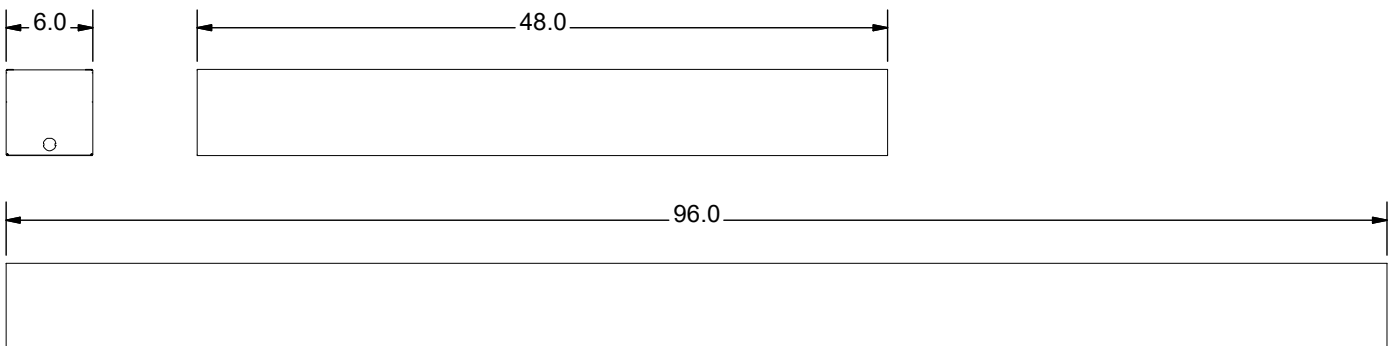
Mounting

Holes provided for surface and suspended mounting, as well as knock outs for row-mounting

Construction

- Precision bent for added strength
- Spot welded steel end caps for added rigidity
- Access panel provided for easy wiring
- Shallow fixture design for ease of installation and a clean, professional look

PRODUCT DIMENSIONS



PRODUCT KEY

Fixture Type	Fixture Size	Number of Lamps	Lamp Watts	Lamp Type	Voltage	Ballast Type	Reflector Type	Options
BFSDV								
	4'	1	32	T8	UNV (120-277)	L - Low	R1	
		2	54	T5	347	N - Normal	R2	
		3				H - High	R3	
	8'	2						
		4						
		8						

Options

Reflectors R1 - Reflector - White Steel R2 - Reflector - White Aluminum R3 - Reflector - Specular Aluminum Battery Back-Up B15 - 1 Lamp Bodine Battery Backup B16 - 2 Lamp Bodine Battery Backup* <small>*B16 isn't available for T5 347V configurations</small>	Lenses L0 - No Lens Supplied L15 - Clear Prismatic Acrylic P12 (0.11" Thick) L18 - Frosted Acrylic Lens L55 - Clear Acrylic Lens (0.08" Thick) Louvers J1 - Parabolic Aluminum Baffle, Blade Centers 2"
---	---

